



*Superior Adjuvant for
Sugar Cane
Aphid Pesticides*

Deposition and Penetration Adjuvant

Sugarcane aphid is becoming a serious pest to control in many grain sorghum areas. Newer pesticide chemistries like Transform[®], Sivanto[®] and Centric[®] work via contact, systemic, translaminar or ingestion. In order to enhance knock down and residual, especially under high temperatures and low humidity, a premium adjuvant like EXIT is recommended to enhance coverage, absorption and residual.



BENEFITS OF EXIT

Figure 1. Deposition

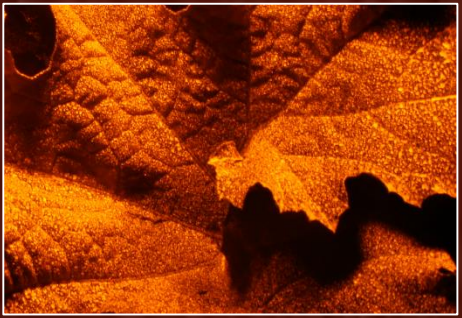


Figure 2. Penetration

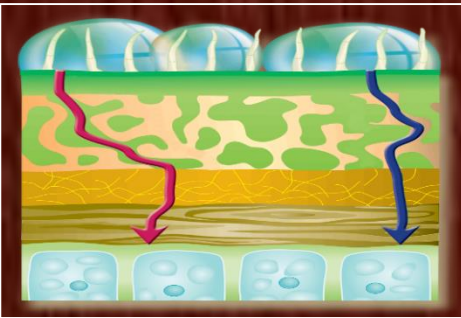


Figure 3. Humectant *



EXIT combines the cuticle penetration of a premium quality Esterfied seed oil with a proprietary surfactant and humectant system. The combination maximizes coverage and biological activity of contact and translaminar pesticides.

Recommended Rate for Maximum Performance:
Per Volume: .75 – 1.0 % v/v
Rate per Acre: 8 to 16 ounces/acre

**Keeps pesticides in liquid state on plant surface longer.*

012- Exit, Superior Adjuvant for Sugar Cane Aphid Pesticides

MILLER CHEMICAL & FERTILIZER, LLC
Hanover, Pennsylvania. 17331 U.S.A.
Telephone: (717) 632-8921

For more information on EXIT please contact your Miller Chemical representative